

THE PROPOSED DUMPING OF PCB-LADEN SOIL FROM THE CHICAGO AREA CLEANUP ON TOP OF THE MAHOMET AQUIFER

(Yes folks – Chicago is about to dump on us again!)

WATCH



PowerPoint prepared and probably presented by George H. Wissmiller

Version 101204

WATCH

Who I Am



- 💧 George H. Wissmiller
- 💧 Retired Champaign City Police Officer
- 💧 National Safety Council and Richland College traffic safety instructor
- 💧 DeWitt County resident
- 💧 Recent Candidate for the Illinois House of Representatives
- 💧 President of WATCH

WATCH



What is WATCH

- 💧 We're Against Toxic Chemicals
- 💧 A volunteer citizens group
- 💧 Minimal budget
- 💧 No legal representative
- 💧 We are promoting action by governmental bodies and now have some support from several
- 💧 A lot of determination
- 💧 The advantage of being RIGHT! For instance the referendum effort (described later) cost the Coulters \$50,000 and us \$6,000 and we prevailed overwhelmingly

www.watchclintonlandfill.com

WATCH

Why bother – It's Hopeless.....**NOT SO!**

In spite of our severely limited time, resources, no legal representation, etc, we have made substantial progress fighting this problem. We now have a government agency with an attorney and substantial financial resources engaged in addressing the legal and technical issues.

If you think you can't make a difference it is far from true! We already have - but we need your help to prevail.

WATCH

Our Interest in This

You may be thinking we're environmentalists. That's not true – we need them but that's just not our thing. I'm a retired cop – heavy into public safety. This is a public safety issue!



This is a very real, very direct, very immediate threat to the health and safety of 750,000 Central Illinois residents – us and our kids. It's about our water!

WATCH

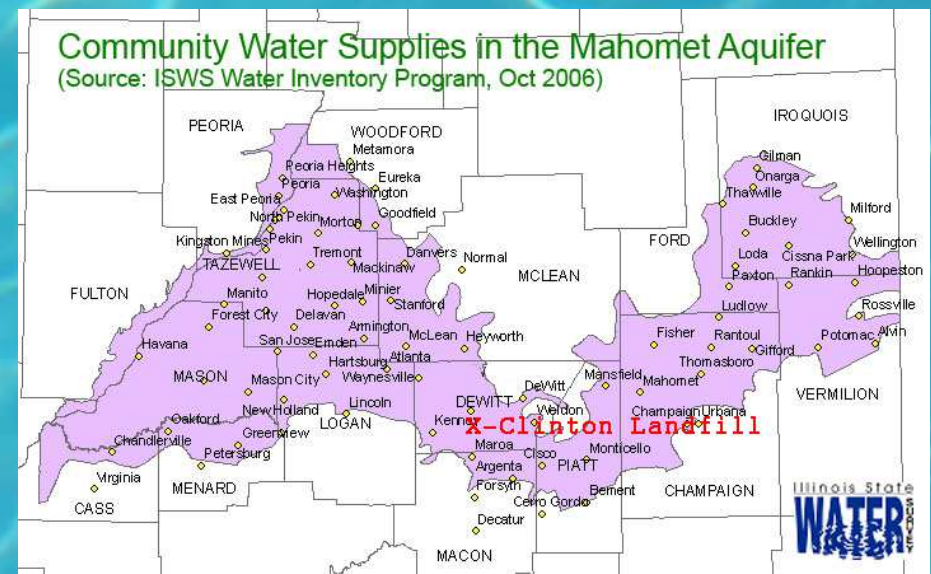
Our Interest in This

We also don't like seeing central Illinois governmental agencies "played". What's going on here is Chicago wanted to dump this stuff close. Wisconsin or Indiana would have stopped them cold so they turned to Central Illinois. The larger counties have the resources to avoid this so they picked a small county - DeWitt. This way they can do an end run around the system and threaten the water supply of 7 counties including Champaign, Macon and McLean without having to get their approval.

WATCH

The Basic Problem

Clinton Landfill is applying for permits to haul **MILLIONS** of tons of PCB laden soil from the Chicago USEPA cleanup to the proposed landfill in Clinton where they will be dumped on top of the Mahomet Aquifer. The Mahomet Aquifer is the sole water source for about 750,000 central Illinois residents. Protections are inadequate at best and time is short.



WATCH



What's Going to be Between the PCBs and Our Water?

The “protection system” Clinton Landfill is providing between these poisons and our water consists of three sheets of plastic sheeting (literally a heavier version of the stuff that plastic bags are made of), three feet of compacted clay the USEPA (United States EPA) refers to as “kitty litter,” and underlying dirt the USEPA insists on referring to as “clay” even immediately after admitting they really don't know its composition.

WATCH

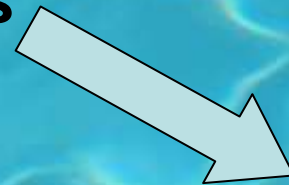
The Coulter Family

The Coulter family companies are a group of companies related in various ways but all owned by the Coulter family. Here we will be concerned primarily with the Clinton Landfill and PDC Labs (the latter will do the testing if this is approved).

The Coulter Family of Peoria



The Coulter Companies



Peoria Disposal

Area Disposal

PDC Labs

Others



Clinton Landfill

WATCH

Don't Out Think Your Common Sense

Area Disposal and the State and Federal EPAs would have you believe it's a very complex decision requiring an advanced degree in geology.

It's Not! It's just common sense! The question is "Is it responsible and realistic to dump millions of tons of PCB-laden soil (a very well known threat) on top of the water supply for 750,000 people when other options exist?"

Clearly NO!

WATCH



The DeWitt County Board's Situation

The DeWitt County Board signed contracts with Area Disposal to allow this. It has been established that the Board did not understand what they were signing (among other questions) when they pledged their support.

Now the new board, on advice of the State's Attorney, doesn't want to do anything to impede the approval process for fear of litigation.

We are returning to the DeWitt Board with legal arguments that they are not bound by policy decisions of prior boards and they can now reflect the very clearly expressed wishes of the citizens of the County.

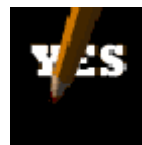
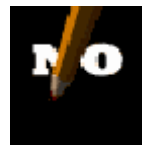
WATCH

2008 Referendums

There have been two referendums in DeWitt County about this approval:

2008 Referendum Results – DeWitt County

Feb. 2008 Should US EPA Permit Chemical Landfill			
	Yes	1,225	26%
4	No	2,531	74%
	Total	3,756	100%
Nov. 2008 Should County Rescind Landfill Contract			
4	Yes	3,830	68%
	No	1,827	32%
	Total	5,657	100%



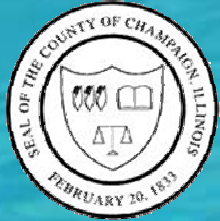
About 75% of DeWitt County voters voted against this.

About 70% of DeWitt County voters voted to cancel this.

*The Feb. 2008 referendum included all DeWitt County.
The Nov. 2008 referenda include selected townships,
comprising about 75% of voters in DeWitt County.*

So the citizens of DeWitt County are on record as being very much, repeatedly, against this!

WATCH



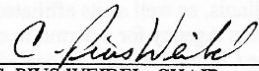
Champaign County

January 24, 2008 the Champaign County Board passed a resolution opposing this dumping and reaffirmed that resolution in December, 2010

NOW, THEREFORE, BE IT RESOLVED by the Champaign County Board, Champaign County, Illinois, as follows:

1. The County Board of Champaign County, Illinois opposes the permitting by the United States Environmental Protection Agency of the proposed Chemical Waste Landfill as a portion of the site known as the Clinton Landfill 3 to be located just south of Clinton, Illinois; and
2. The Champaign County Clerk is hereby authorized to provide a copy of this Resolution to the USEPA Region 5 Administrator Mary Gade, 77 West Jackson Boulevard, Chicago IL 60604, and refer to the application submitted by Clinton Landfill Inc. and directed to Margaret Guerriero, Director of Land and Chemicals Division.

PRESENTED, ADOPTED, APPROVED, AND RECORDED this 24th day of January, 2008.

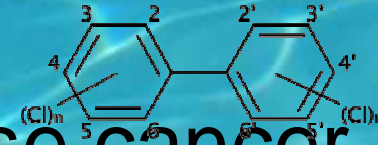

C. PIUS WEIBEL, CHAIR
CHAMPAIGN COUNTY BOARD

Similar resolutions were passed in Piatt and Logan Counties.

WATCH



Polychlorinated Biphenyl (PCB) Risks and Dangers



PCBs have been shown to cause cancer, harm the immune system, harm the reproductive system, cause neurological problems, harm the endocrine system and have various other detrimental effects on health.

They last forever, are easily transported, move through the food chain and are invisible.

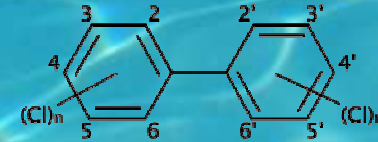
WATCH



Polychlorinated Biphenyl Risks and Dangers

“Polychlorinated Biphenyl (PCB)”

PCBs belong to a broad family of man-made organic chemicals known as chlorinated hydrocarbons. PCBs were domestically manufactured from 1929 until their manufacture was banned in 1979. They have a **range of toxicity** and vary in consistency from thin, light-colored liquids to yellow or black waxy solids. Due to their non-flammability, **chemical stability**, high boiling point, and electrical insulating properties, PCBs were used in hundreds of industrial and commercial applications including electrical, heat transfer, and hydraulic equipment; as plasticizers in paints, plastics, and rubber products; in pigments, dyes, and carbonless copy paper; and many other industrial applications.” (from the USEPA website)



WATCH



Polychlorinated Biphenyl Release

“Prior to the 1979 ban, PCBs entered the environment during their manufacture and use in the United States. Today PCBs can still be released into the environment from poorly maintained hazardous waste sites that contain PCBs; illegal or improper dumping of PCB wastes; leaks or releases from electrical transformers containing PCBs; and disposal of PCB-containing consumer products into municipal or other landfills not designed to handle hazardous waste. PCBs may also be released into the environment by the burning of some wastes in municipal and industrial incinerators.

Once in the environment, **PCBs do not readily break down and therefore may remain for long periods of time cycling between air, water, and soil.** PCBs can be carried long distances and have been found in snow and sea water in areas far away from where they were released into the environment. As a consequence, PCBs are found all over the world. In general, the lighter the form of PCB, the further it can be transported from the source of contamination.

PCBs can accumulate in the leaves and above-ground parts of plants and food crops. They are also taken up into the bodies of small organisms and fish. As a result, people who ingest fish may be exposed to PCBs that have bioaccumulated in the fish they are ingesting. ” (from the USEPA website)

WATCH



Polychlorinated Biphenyl and Cancer

“EPA uses a weight-of-evidence approach in evaluating the potential carcinogenicity of environmental contaminants. EPA's approach permits evaluation of the complete carcinogenicity database, and allows the results of individual studies to be viewed in the context of all of the other available studies. **Studies in animals provide conclusive evidence that PCBs cause cancer.** Studies in humans raise further concerns regarding the potential carcinogenicity of PCBs. Taken together, the data strongly suggest that PCBs are probable human carcinogens.” (from the USEPA website)

WATCH



Polychlorinated Biphenyl and the Immune System

“The immune effects of PCB exposure have been studied in Rhesus monkeys and other animals. It is important to note that the immune systems of Rhesus monkeys and humans are very similar. **Studies in monkeys and other animals have revealed a number of serious effects on the immune system following exposures to PCBs**, including a significant decrease in size of the thymus gland (which is critical to the immune system) in infant monkeys, reductions in the response of the immune system following a challenge with sheep red blood cells (a standard laboratory test that determines the ability of an animal to mount a primary antibody response and develop protective immunity) and other infections in PCB-exposed animals. Individuals with diseases of the immune system may be more susceptible to pneumonia and viral infections. **The animal studies were not able to identify a level of PCB exposure that did not cause effects on the immune system.**” (from the USEPA website)₁₉

WATCH



Polychlorinated Biphenyl – Reproductive Effects

“Reproductive effects of PCBs have been studied in a variety of animal species, including Rhesus monkeys, rats, mice and mink. Rhesus monkeys are generally regarded as the best laboratory species for predicting adverse reproductive effects in humans. **Potentially serious effects on the reproductive system were seen in monkeys and a number of other animal species following exposures to PCB mixtures.** Most significantly, PCB exposures were found to reduce the birth weight, conception rates and live birth rates of monkeys and other species and PCB exposure reduced sperm counts in rats. **Effects in monkeys were long-lasting and were observed long after the dosing with PCBs occurred.**” (from the USEPA website)

WATCH



Polychlorinated Biphenyl – Neurological Effects

“Proper development of the nervous system is critical for early learning and can have potentially significant implications for the health of individuals throughout their lifetimes. Effects of PCBs on nervous system development have been studied in monkeys and a variety of other animal species. **Newborn monkeys exposed to PCBs showed persistent and significant deficits in neurological development, including visual recognition, short-term memory and learning.** Some of these studies were conducted using the types of PCBs most commonly found in human breast milk.

Studies in humans have suggested effects similar to those observed in monkeys exposed to PCBs, including learning deficits and changes in activity associated with exposures to PCBs. The similarity in effects observed in humans and animals provide additional support for the potential neurobehavioral effects of PCBs. ” (from the USEPA website)

WATCH



Polychlorinated Biphenyl – Endocrine Effects

“There has been significant discussion and research on the effects of environmental contaminants on the endocrine system ("endocrine disruption"). While the significance of endocrine disruption as a widespread issue in humans and animals is a subject of ongoing study, **PCBs have been demonstrated to exert effects on thyroid hormone levels in animals and humans.** Thyroid hormone levels are critical for normal growth and development, and alterations in thyroid hormone levels may have significant implications.

It has been shown that PCBs decrease thyroid hormone levels in rodents, and that these decreases have resulted in developmental deficits in the animals, including deficits in hearing. PCB exposures have also been associated with changes in thyroid hormone levels in infants in studies conducted in the Netherlands and Japan. ” (from the USEPA website)

WATCH



PCBs - Other Non-Cancer Effects

“A variety of other non-cancer effects of PCBs have been reported in animals and humans, including dermal and ocular effects in monkeys and humans, and liver toxicity in rodents. Elevations in blood pressure, serum triglyceride, and serum cholesterol have also been reported with increasing serum levels of PCBs in humans. ” (from the USEPA website)

WATCH



Polychlorinated Biphenyl (PCBs)

“In summary, PCBs have been demonstrated to cause a variety of serious health effects. PCBs have been shown to cause cancer and a number of serious non-cancer health effects in animals, including effects on the immune system, reproductive system, nervous system, and endocrine system. Studies in humans provide supportive evidence for the potential carcinogenicity and non-carcinogenic effects of PCBs. The different health effects of PCBs may be interrelated, as alterations in one system may have significant implications for the other regulatory systems of the body.” (from the USEPA website)

WATCH

Visibility



You may be thinking “These pictures are not examples of PCB poisoned water” – and you’re right. PCB poisoned water looks like the background – this poison in the concentrations involved here is invisible, odorless and tasteless.

WATCH



ILEPA Geologist and Sole Source Aquifer

I attended a public meeting held by the Illinois EPA prior to their approval of this. At the meeting an **IEPA (Illinois EPA) geologist** told me that, in her personal opinion, this was a **real bad idea** – they were just approving it because it complies with the current regulations. She is also the one who made me aware of the possibility of getting the Mahomet Aquifer designated a Sole Source Aquifer. This is one of the tools we are using to fight this.

WATCH



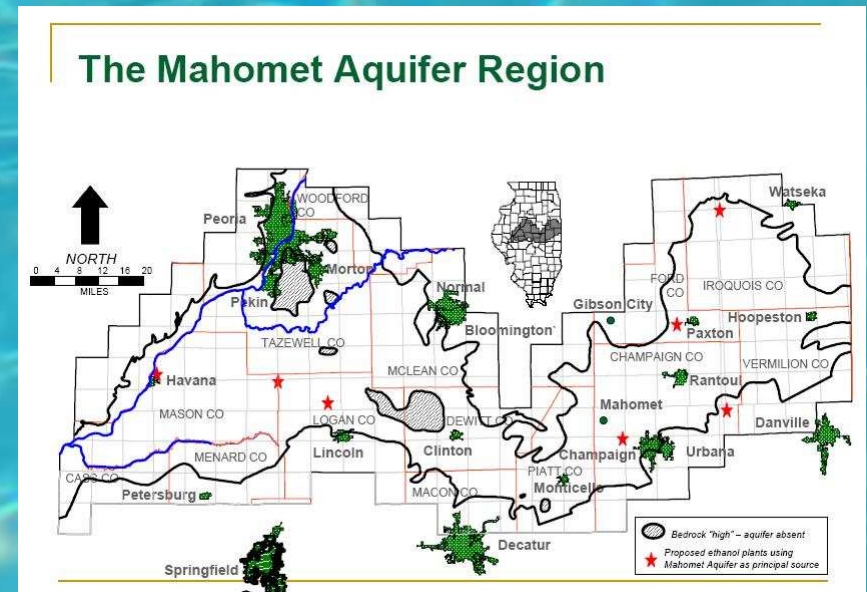
IEPA geologist about monitoring

I spoke to another IEPA geologist at the same meeting. I asked him if IEPA was going to monitor this landfill at all. He said there would be routine monitoring and they would collect their own samples. I asked “So, - about once a year?” He said no – they wouldn’t get to it that often. “So – once every ten years?” Nope – not that often. So IEPA is, essentially, doing no monitoring and is willing to mislead the public right up to the point of outright lies to conceal this fact!

WATCH

Why Are They Not Concerned?

- 💧 Illinois EPA folks are in Springfield.
- 💧 Federal EPA folks are in Chicago.
- 💧 The Coulters (who own Clinton Landfill) are in Peoria.



- 💧 Springfield, Chicago, and Peoria are not over the Mahomet Aquifer!

No one who is deciding this has to deal with the results of this decision!



WATCH

Liquid PCB's

The DeWitt County Board was told publicly there would be no liquid PCBs (much more dangerous) stored here.

The Illinois EPA permit applied for and received by Peoria Disposal provides for liquid PCBs.

Even if they don't haul in liquids PCBs they will leak out of the millions of tons of soggy PCB-laden soil as it is hauled from Chicago.

So we know from past experience we can't trust Peoria Disposal!

WATCH



Methane Suit

The Clinton Landfill is currently being sued by over 200 local residents for failing to provide and maintain equipment that keeps methane gas and other gasses from their landfill from entering the local atmosphere. The IEPA knew about these violations for two years and did nothing. These gasses smell, pose health threats and are explosive – wells have literally exploded.



WATCH

Dr. Lee's study for the DeWitt Board (May 7, 2009)

Overall Conclusion

The study concluded that the proposed Chemical Waste Unit (CWU) at the Clinton Landfill No. 3 will, if permitted, represent a significant long-term threat to the quality of the groundwater resources of DeWitt County. The Area Clinton Landfill, Inc. Application for a Chemical Waste Unit at the Clinton Landfill No. 3. does not adequately present or reliably discuss, among other things, the following:

- the nature and potential hazards associated with the wastes expected to be buried at the CWU,
- the ability of the proposed CWU landfill waste containment systems, natural strata, and groundwater monitoring system to prevent leachate leakage from the CWU for as long as the wastes in the unit and overlying landfill represent a threat to pollute area groundwater, or
- the assurances of provision of adequate postclosure funding to monitor, maintain, and remediate polluted groundwaters for as long as the wastes in the CWU will be a threat, or
- the characteristics and present and foreseeable future use of all groundwater resources that stand to be adversely impacted by wastes in the CWU.



KPRG Study for the Water Authority (Nov. 2010)

Executive Summary

The application for Clinton Landfill #3 gained IEPA approval based on **simulations created by a program that is very limited in its capabilities**. The simulations, and data and analysis provided to the **USEPA, largely ignored these limitations except to the extent the limitations were exploited for the benefit of the applicant**. Most notable of these failures is the lack of calibration, absence of fundamental hydrogeology data, and the lack of evaluation of lateral migration.

Additionally, site specific, reasonable and meaningful hydrogeological data is lacking. **The perceived hydrogeology is just that – perceived. The evaluation assumes much but is based on little more than inapplicable speculation.**

What is necessary is a more detailed review in light of known geologic and hydrologic systems at the site. This accurate understanding must then be applied to a three-dimensional groundwater model. The evaluation of the model must be expanded both in terms of time and distance. **Failure to perform this most basic evaluation will result in a failure to identify potential threats to human health and the environment.**

WATCH

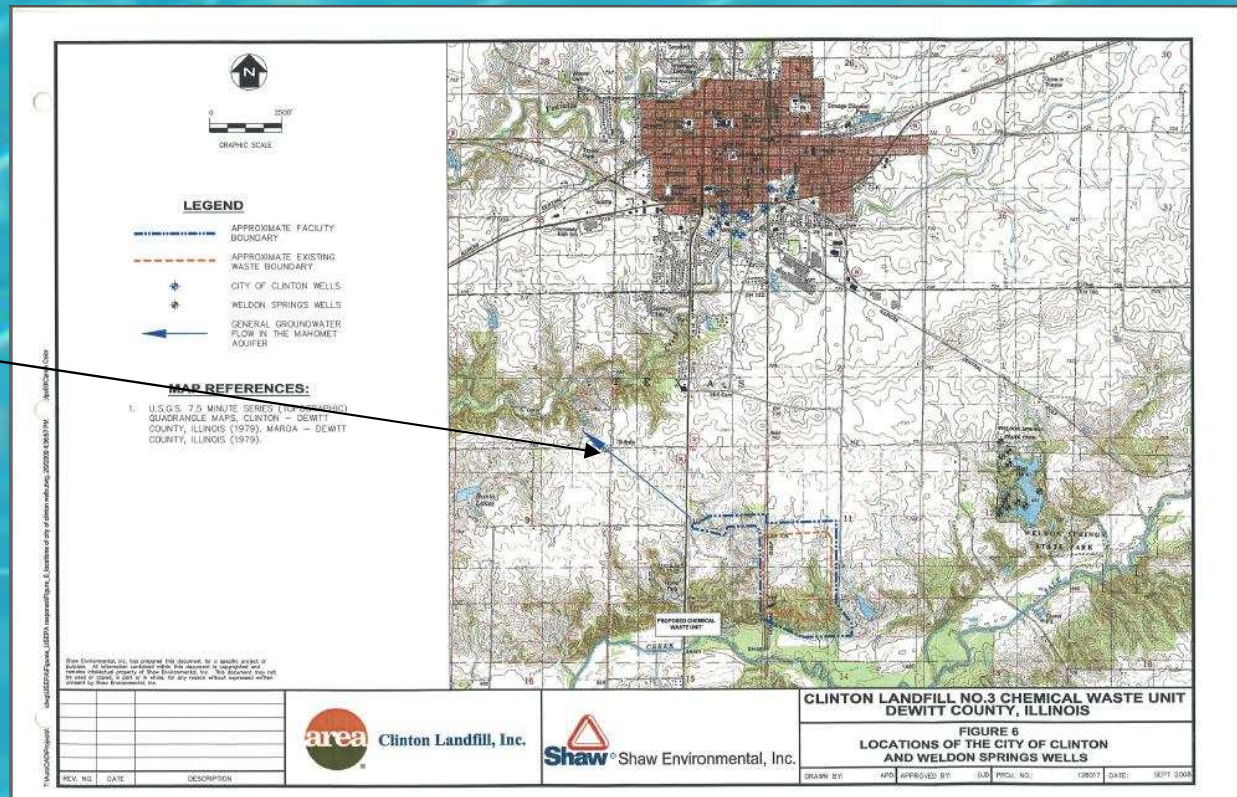
USEPA Administrator Sworn Testimony

In 1980, in sworn testimony before Congress, the USEPA Administrator said that plastic liner like those proposed at the Clinton Landfill **will fail.**

WATCH

US EPA

At the hearing the USEPA representatives said the Mahomet Aquifer flows basically southwest – away from Clinton. And yet according to Area Disposal's own map:



WATCH

Three Steps

This plastic liner system has been shown repeatedly by the USEPA and others not to provide long term protection.

So they doubled up the “protection” – two layers of plastic. They started failing.

So at the Clinton Landfill they are going to triple it up. Three layers of a system we know doesn't work!

3 X Ø long term protection = Ø long term protection!

WATCH



When is “Clay” not Clay?

At the hearing the USEPA representatives insisted on referring to the soil between the PCBs and the aquifer as “relatively impermeable clay” even after admitting that they know there is dirt, sand, gravel and voids included. They have no idea of percentages or locations – but it’s all “clay” according the USEPA because that makes approval seem more reasonable.

WATCH



Familiarity between Area Disposal and the USEPA

Part of the problem they are finding with BP in the Gulf is the symbiotic relationship between the regulating agencies and the company's employees. The USEPA representatives and Area Disposal executives (the Coulters) are extremely chummy. The USEPA publicly refers to the Coulters and themselves publicly as "we," reserves seats at hearings for them and not for those protecting the environment, provides them handouts not provided to those protecting the environment etc. etc.

WATCH



Property Values

- This will inevitably affect property values
- The methane violation by the Landfill has already done so.
- As it becomes more widely known that our water supply is threatened values will, obviously, drop.
- Businesses will be less inclined to locate over the aquifer.

WATCH



Government Waste of Tax Dollars?

How can building an entirely new facility to store these dangerous chemicals possibly be more cost effective than putting them in already existing storage elsewhere.

Isn't this just another example of government recklessly throwing tax dollars at a problem?

WATCH



“PCBs break down naturally relatively quickly”

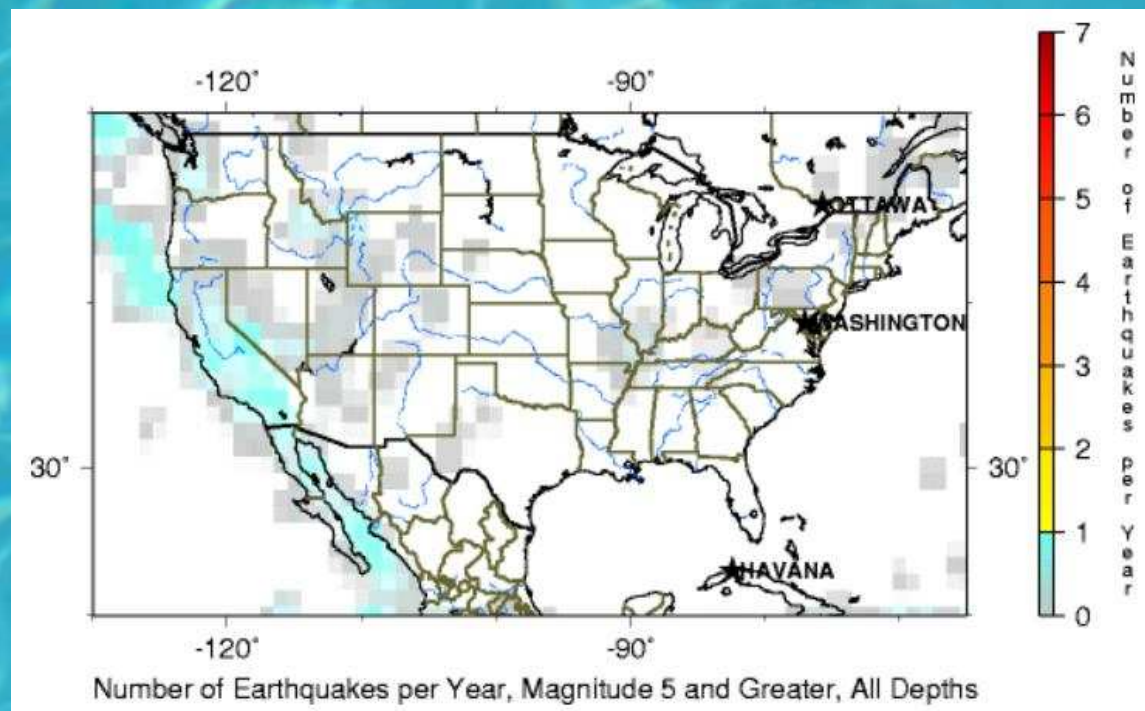
Steve Johnson, one of the USEPA representatives, told us at the hearing that PCB's break down relatively quickly naturally. This directly contradicts the information on the USEPA site, both experts retained and the industry standard – however it does make approving this seem more reasonable.

WATCH

Seismology (Earthquakes etc.)

An earthquake could easily rupture any protection system. As you can see from the map below (from the USGS site) Central Illinois is grey – meaning we have a significant number of severe earthquakes. The USEPA representatives said seismic activity was not a concern in this area.

In March, 2008 there were three earthquakes felt in Clinton.



Horizontal Migration

- 💧 According to the USEPA site “PCBs can be carried long distances and have been found in snow and sea water in areas far away from where they were released into the environment.”
- 💧 As noted in the study done for the Mahomet Water Authority the application fails to address horizontal migration in any form.

WATCH

100 Year Life Expectancy

Even if everything goes exactly according to plan and there are no quakes, floods, tornados, etc. No mis-management, human error, planning mistakes, sabotage, etc. Even if we get that incredibly lucky, this “protection system” **is only designed to last 100 years**. In other words we are planning on unnecessarily leaving a huge environmental disaster for our descendants to deal with.

WATCH



KPRG Study Identifies Testing Problems

The only regular water testing to see when (not “if” but “when”) these poisons have leaked into our aquifer is my idea of a retired cop’s nightmare! The Coulter Companies (the company who stands to make millions if the tests stay clean and be sued into oblivion if they fail) will gather the samples unsupervised. They will then test them unsupervised in their own lab and turn the “results” over to the US EPA. **And the Federal EPA sees no problem with this procedure!**

WATCH

What Happens When It Leaks???

What is the plan to deal with the inevitable leaks? ~~Zip~~ – ~~Zero~~ – ~~None~~ – ~~Nada~~. I asked and there is no plan except the observation at the hearing by the US EPA that “I suppose we’d have to dig it all out - or bring in bottled water”.

Dig what all out? – the poisoned aquifer in the 15 counties? Bottled water for 750,000 people?

WATCH



Bankruptcy of Peoria Disposal

A common strategy for businesses to evade maintenance costs of closed facilities is to declare bankruptcy and reopen under a different charter w/o the maintenance responsibility - or just retire. The maintenance responsibilities also cease after 30 years.

The taxpayers (us) would then be stuck with the maintenance and/or clean up costs. The Hudson River PCB cleanup cost **\$460 million**.

WATCH

Possible Future Scenarios

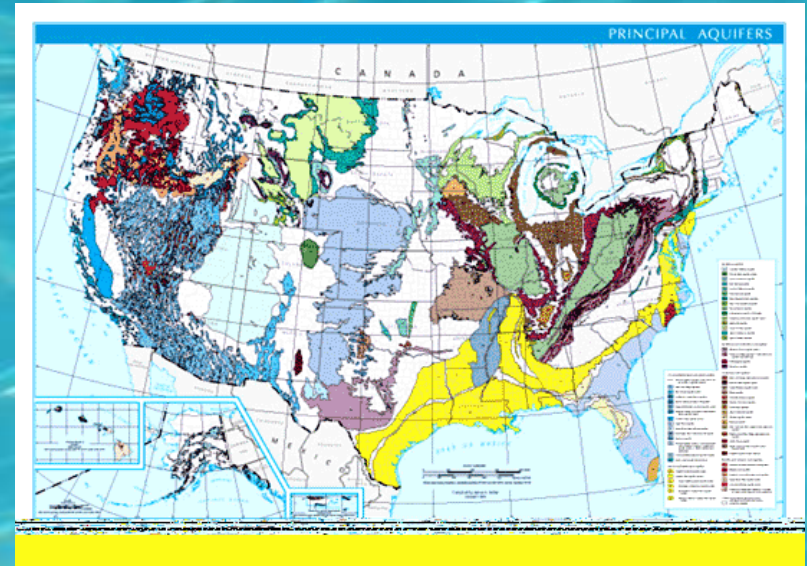
This is hard to predict. We know this thing is expected to poison the aquifer at some point. We know that PDC will either no longer exist or will probably promptly declare bankruptcy. We know there is no plan for dealing with such a failure. We know costs will be in the hundreds of millions or above.

We know this is headed for disaster on a huge scale!

WATCH

Other Disposal Options

💧 The Chicago PCBs could be (here's where the complex geological stuff comes in) stored somewhere on the millions of square miles in the United States that are not directly over a huge drinking water reservoir in a heavily populated area!



US Dept. of the Interior
Aquifer Map

💧 They could put them in an already existing landfill that's not over an aquifer – there's already adequate capacity elsewhere.

💧 PCBs can be incinerated. It's expensive but it can be done and then they are gone.

💧 They could leave them where they are – why, if this stuff is too unsafe to have in Chicago, is it safer to haul it halfway across the state and dump it over our water supply?



What Can an Individual Do?

- 💧 Sign a petition (available after this presentation)
- 💧 Attend a WATCH meeting
- 💧 Become active in WATCH
- 💧 Write your legislators
- 💧 Donate to WATCH (Donations may be made to WATCH, 17185 Parnell Rd., DeWitt, IL 61735)

WATCH

What Can a Group Do?

- 💧 Pass a resolution opposing this dumping
- 💧 Join WATCH.
- 💧 Form your own opposition group
- 💧 Litigate
- 💧 Donate



WATCH

The Opposition

The Landfill people or one of the EPAs may very well hear about this presentation and come in with a follow-up talk. One question I'd be interested in hearing the answer to from them is "Why did it take a volunteer citizens group to bring this to our attention – why weren't you here first and here long ago?"

WATCH

In Closing

We've been fighting this for years – literally. We've talked to literally hundreds of people. I have yet to hear ANYONE say this is a good idea, that it is responsible behavior, that it is being a good steward of the environment, makes sense, or that it is in the best interests of our children and future generations.

Proponents are real quick to say “It complies with all current regulations” – just like BP did in the Gulf and most of the people did who were responsible for the great environmental disasters of our time.

There has got to be some room for common sense here – and it has to come from us!

Thank You for your time and
interest!

The members of
WATCH



Illinois EPA



US EPA



Dewitt County Board



Area Disposal Company

www.watchclintonlandfill.com